

JUL 22 2005

Index No. E-21

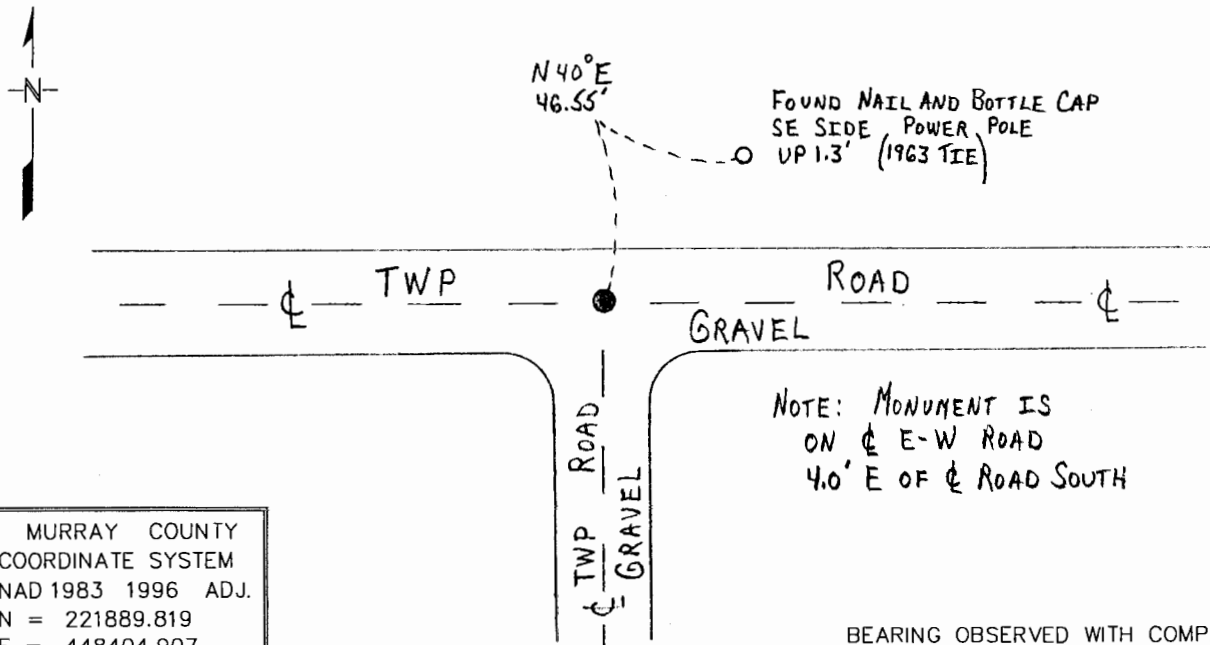
# CERTIFICATE OF LOCATION OF GOVERNMENT CORNER

NORTHEAST Corner of Section 11, Township 108 N, Range 43 W

5th Principal Meridian, State of Minnesota, County of MURRAY

At the corner location shown on the sketch:

- On 9/30/03 found a 10" BY 12" BY 14" GRANITE STONE, DOWN 3.4'  
DATE
- left monument as found,     lowered monument,     removed monument (explain)
- On 9/30/03 Placed a 3/4" BY 24" REBAR WITH A PLASTIC CAP STAMPED  
DATE  
"MN DNR LS 17003", DOWN 0.4', OVER FOUND STONE



MURRAY COUNTY  
 COORDINATE SYSTEM  
 NAD 1983 1996 ADJ.  
 N = 221889.819  
 E = 448404.907

BEARING OBSERVED WITH COMPASS

Statement of evidence for this corner location is on back of this page.

WMA00165.00.00.01

I certify that this document was researched and prepared by me or under my direct supervision.

SIGNATURE Bruce W. Shippel DATE 7-19-05 License Number 17003

Title:     Land Surveyor     Professional Engineer     County Surveyor     County Engineer

The DNR Division of Lands and Minerals contacted the following for survey information:

Minnesota Secretary of State's Office  
Murray County Recorder's Office  
Murray County Highway Engineer's Office  
Madsen Land Surveying, Inc. of Fairmont

1866 U.S. General Land Office notes, obtained from the Secretary of State's Office, show the corner marked with a post in a mound.

1957 January, a page in a DNR field notebook, lists the following ties to corner:

corner fence post, southeast, 49.6 feet  
corner fence post, southwest, 47.0 feet  
power pole, northeast, 46.2 feet

A description of what kind of monument was found or set at corner is not given. The corner was found to be:

2649.3 feet from the north quarter corner of Section 11  
2651.5 feet from the east quarter corner of Section 11  
5291.5 feet from the southeast corner of Section 11

1963 September, a page in a DNR field notebook, shows that a redhead spike was found at corner. The redhead spike was replaced with a railroad spike and the following ties were taken:

at the intersection of the center line of roads north, south, east and west  
nail and bottle cap, southeast side power pole, northeast, 46.8 feet  
nail and bottle cap, northeast side corner fence post, southeast, 46.8 feet  
center of telephone cable post, southwest, 44.8 feet

1965 October, a page in a DNR field notebook, shows that a railroad spike was found at corner.

1966 September, a page in a DNR field notebook, states that a spike was found at corner per previous DNR survey.

1979 July, field notes for a survey in Section 2 by Gary Martin, LS 12967, obtained from Madsen Land Surveying, Inc., state that a nail was set for corner at the intersection of the center line of Township Roads. The nail was found to be:

2639.47 feet from the north quarter corner of Section 11

1992 November, a page in a field notebook and a Certificate of Survey in Section 12, by John Madsen, LS 13593, obtained from Madsen Land Surveying, Inc., show that a spike was found at corner, 4 inches deep. The spike was replaced with a  $\frac{3}{4}$  inch outside diameter by 24 inch long iron pipe and took the following ties:

bottle cap in power pole, northeast, 46.90 feet  
bottle cap in corner fence post, southwest, 47.90 feet  
bottle cap in gatepost, southwest, 64.15 feet  
on centerline of east-west road  
3 feet east of the centerline of a road south  
2649.37 feet from the west quarter corner of Section 12

1992 November, compiled government corner ties, obtained from the County Highway Engineer's Office, show that a spike was found at corner, 4 inches below the surface. The spike was replaced with a  $\frac{3}{4}$  inch by 24 inch iron pin and following ties were taken to it:

- bottle cap in power pole, northeast, 46.90 feet
- bottle cap in corner fence post, southwest, 47.90 feet
- bottle cap in gate post, southwest, 64.15 feet

2003 September 30, the DNR Division of Lands and Minerals found the iron pipe set by John Madsen in 1992 for corner. Dug with a backhoe and found a 10 inch by 12 inch by 14 inch granite stone:

- 3.4 feet below the surface
- on the centerline of an east-west road
- 4.0 feet east of the centerline of a road south
- 0.32 of a foot south and 0.88 of a foot east of the found iron pipe
- 2645.20 feet from the north quarter corner of Section 11
- 2649.38 feet from the east quarter corner of Section 11
- 5288.89 feet from the southeast corner of Section 11
- 2649.74 feet from the north quarter corner of Section 12

Searched for and found one record tie as shown on the sketch of reference ties.

Analysis of the above information led the DNR Division of Lands and Minerals to conclude that the found granite stone marks the location of the corner. The found iron pipe was discarded and a  $\frac{3}{4}$  inch by 24 inch rebar with a plastic cap stamped "MN DNR LS 17003" was set directly over the found granite stone.